



General Project Information

2022 Elm Creek Parkway Goose Lake Parkway to Jefferson Hwy Street and Utility Improvements



February 2, 2022

Elm Creek Parkway

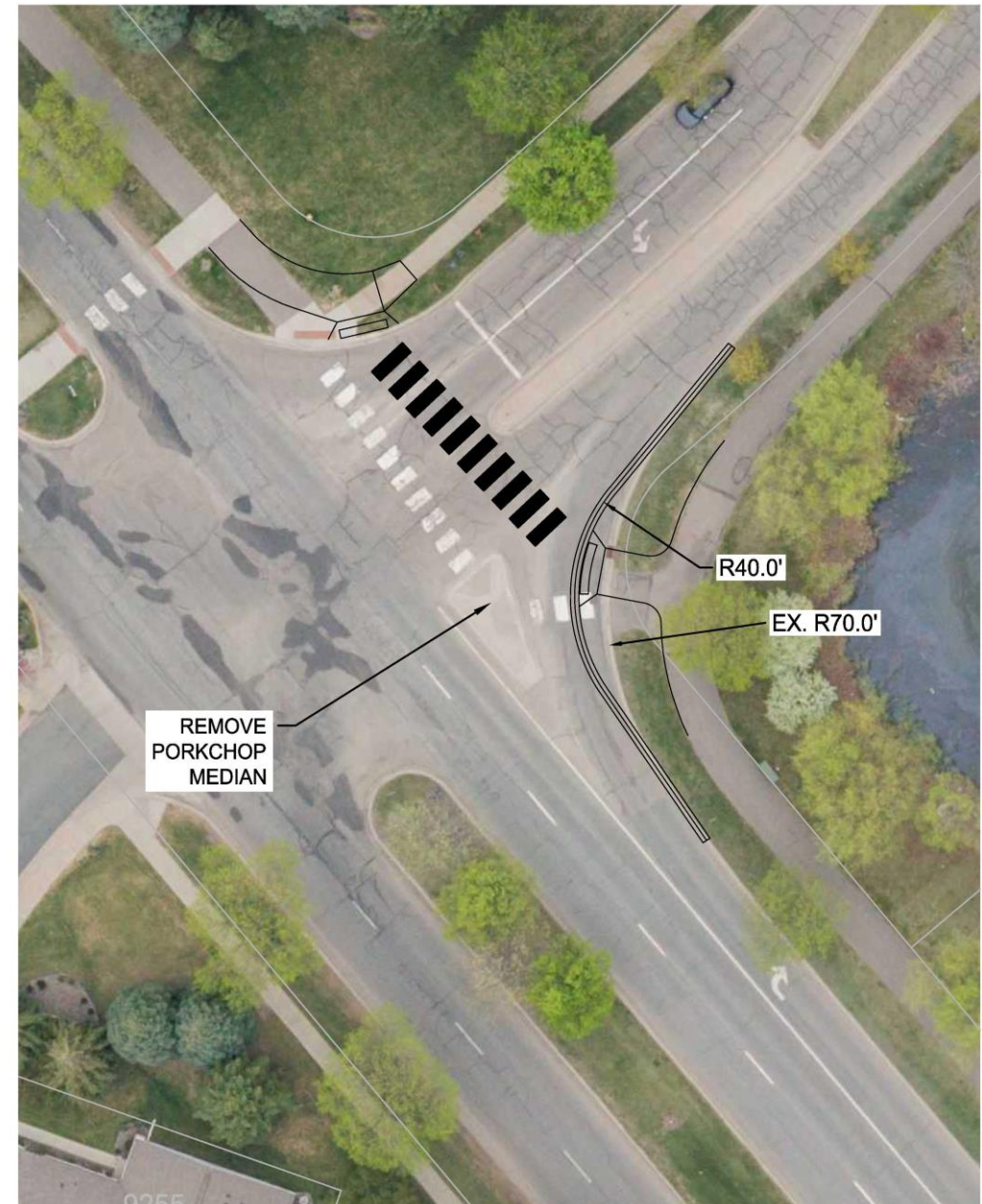
- Street Reconstruction/Reclamation
- Full/Partial Curb replacement
- Trail replacement
- Crosswalk and ped ramp upgrades
- Tree removal and replacement
- Storm sewer improvements
- Fiber conduit extension
- Removal of porkchop median at Champlin Drive and Elm Creek Parkway
- 30-day Roadway Closure





Porkchop Median Removal Elm Creek Parkway/Champlin Dr

- Improves pedestrian crossing conditions
- Provides ADA compliant design
- Reduces curb radius to potentially slow right turn traffic
- Left turn drivers will need to yield to right turn drivers
- Improved maintenance operations
 - Snow removal
 - Sign replacement

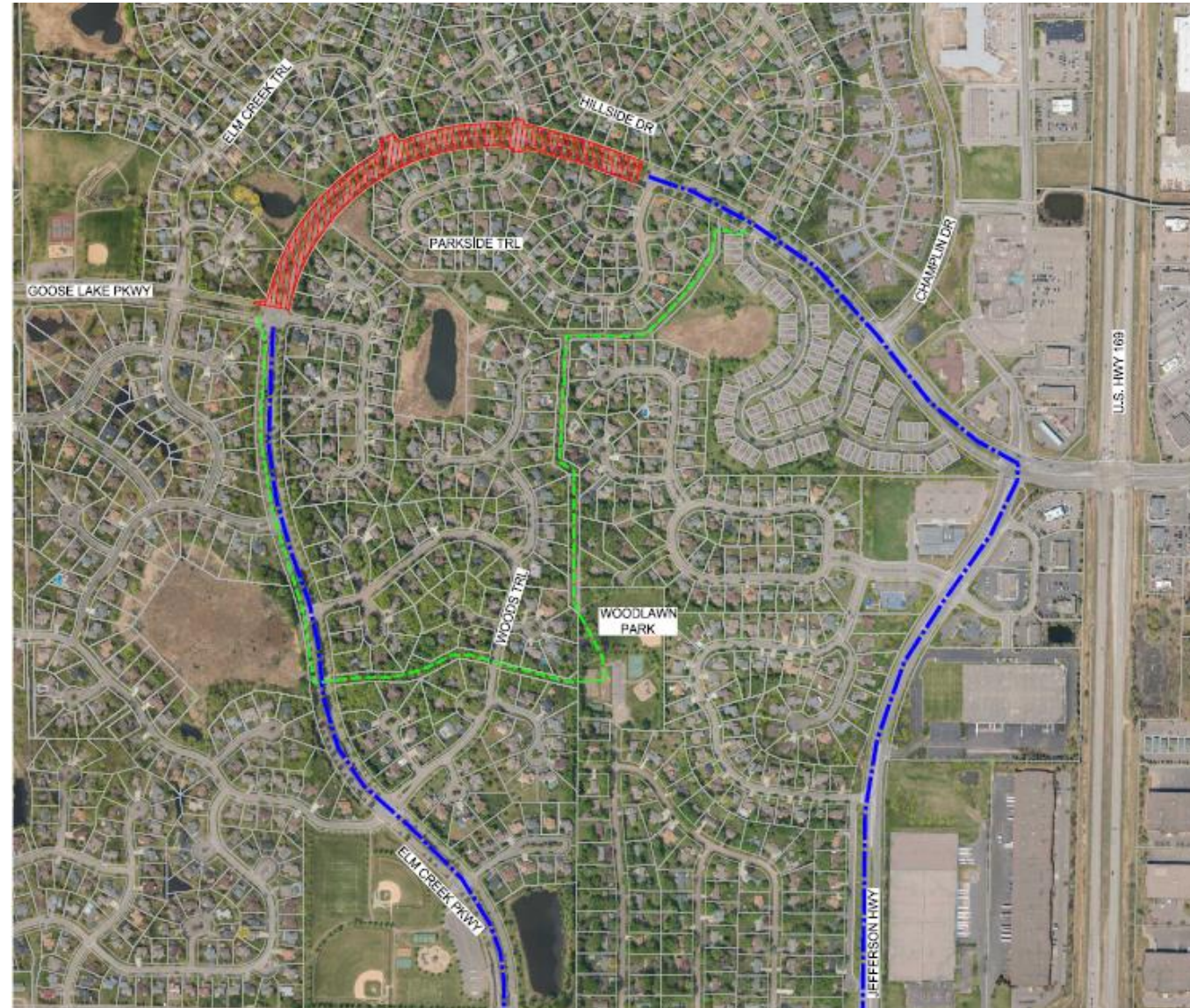


CHAMPLIN DR / ELM CREEK PARKWAY
RIGHT TURN LANE



Elm Creek Parkway Closure/Detour

- Contractor allowed to close Elm Creek Parkway between Goose Lake Parkway and Lakeside Tr/Parkside Tr (west entrance) for a 30 consecutive period between June 13 and August 22, 2022
- 7 days in advance of the closure date signage and message boards will be installed
- Access to emergency vehicles shall be provided at all times
- General traveling public shall use the designated detour
- Outside of 30-day closure, one paved lane in each direction will be open to traffic
- Notification to Champlin/Dayton youth sports association, park and rec programming
- Trail detour signage provided





Project Schedule

| | |
|---|--------------------|
| Approve Plans and Specifications/Authorize Ad for Bid | January 24, 2022 |
| Elm Creek Parkway Open House | February 15, 2022 |
| Open Bids | February 23, 2022 |
| Award Project | March 7, 2022 |
| Pre-construction neighborhood meeting | April 2022 |
| Anticipated Construction | May – October 2022 |
| Assessment Hearing | October 2022 |