

Mississippi Crossings

Original Central Business District

Besides serving as a boat land area, and an important river crossing between the cities of Anoka and Champlin, the Crossings served as Champlin's original central business district. The following pages show a map and a list of business occupying the Crossings around 1900.

The photographs have been provided courtesy of the Champlin Historical Society.

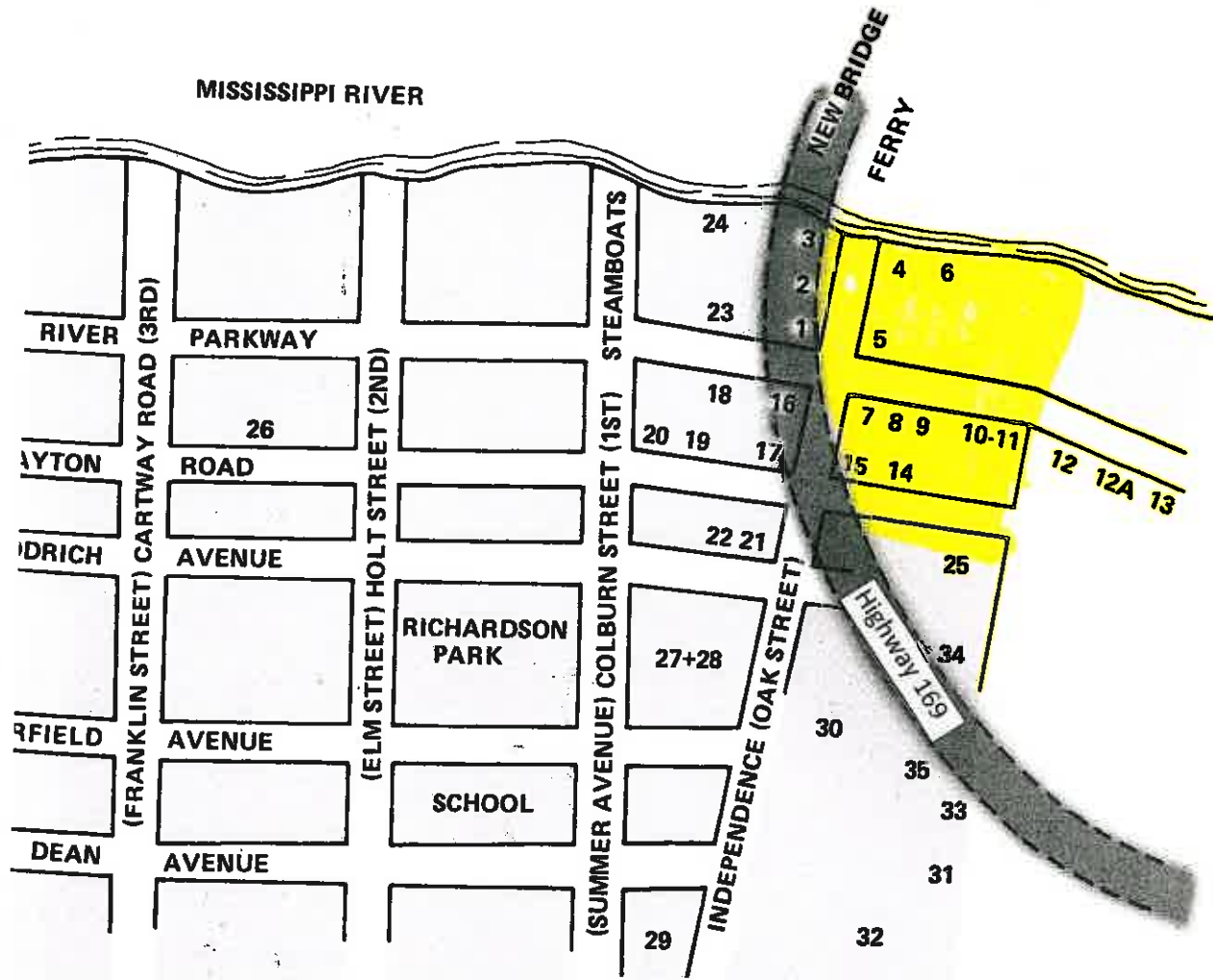
MISSISSIPPI CROSSINGS BUSINESSES

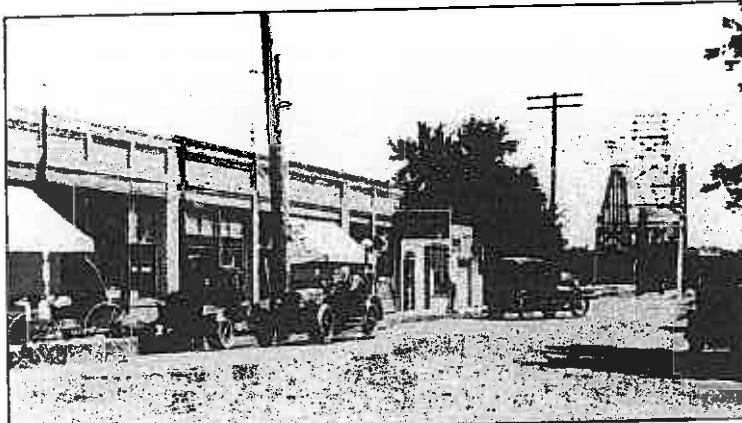
Circa 1900-

- | | |
|--|--|
| 1. O. S. Miller Store
Morses' Grocery Store | 14. LaFleur Shoe Repair
Jerry's Barbershop |
| 2. Tessie Hare's Confectionary
Al Hame's Confectionary | 15. Goodrich & Johnson Feed Mill
Mobile Station
Thrift Bakery |
| 3. Champlin Garage (Felix & Leathers)
D-X Service Station | 16. Leather's Boarding House
Coleman Boarding House
Barnsdall Service Station
John Carlson's Garage
Sinclair Service Station |
| 4. Guimont's Confectionery
Riverview Inn | 17. Herrick Undertaking & Embalming |
| 5. White Eagle Gas
Champlin Oil Co.
Shell Service Station & Cafe
Super America Station | 18. Livery Stable |
| 6. Sage's River View Cabins | 19. Johannson Bus Garage
The Shop |
| 7. Champlin Bank
Post office | 20. George Adcock
Al Talbot's Garage |
| 8. Gem Theatre
Meeting Hall | 21. Library |
| 9. Kimball & Snow building
1886 Alfred Snow
1895 Alden S. Kimball & Snow
1909 Reynolds & Eidem
1915 Alva Smith & Arthur Snow
1918 Alden S. Kimball
1920 Kimball & Joslyn
1928 Mr. Henry Dehn
1931 Archie Butt
1934 Jack Spratt Grocery
1944 Board & Tenold | 22. R. Reynold's Blacksmith
Ebns House Moving
Johansen's Feed Store
Olstad
Bee Supplies |
| 10. Kimball's Feed Store
DeJarlais Garage
Champlin Motor Inn (Burke Garage)
Legg Garage
Anoka Independent Grain & Feed | 23. Morses' Grocery
Post Office
K's Gifts
Champlin Hair Fashions |
| 11. Max O Tire
Barber Shop & Pool Hall | 24. Blake's Grocery
George Adcock's Service Station |
| 12. Stahlberg's Grocery
Champlin Post Office | 25. Board & Tenold Grocery
Champlin Liquor |
| 12A. Pinecrest Floral Service | 26. Brander's Carriage Shop
Earl Pierson Home |
| 13. Guimont's Confectionary
Max Chelley Barber Shop
S. R. Coleman Blacksmith | 27. M. E. Church |
| | 28. 2 nd Methodist Church Location |
| | 29. Baptist Church |
| | 30. Bank |
| | 31. Community Service Center |
| | 32. 3 rd location United Methodist Church |
| | 33. Homes Unlimited |
| | 34. Leta's Motel |
| | 35. Elm Creek Animal Hospital |

The locations of these businesses are shown on the following map.

MISSISSIPPI CROSSINGS BUSINESS LOCATION MAP Circa 1900-





(Top) Orange Miller's Buildings. CA 1916, horses and horseless carriages still competing. (Codes 1, 2, and 3).



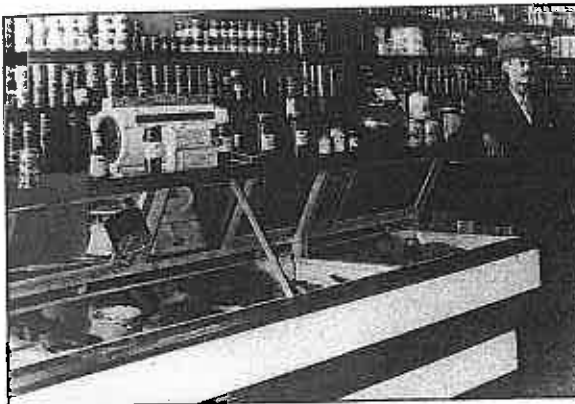
(Left) Business block at west end of Champlin-Anoka Bridge, 1916. Orange Miller's Grocery, General Merchandise Stores and Champlin Garage. Tessie Hare's Confectionary near end of Garage. (Codes 1, 2, and 3)



(Lower left) Interior of Morses' Grocery in old O. S. Miller Building. (Code 1)

(Bottom right) New Morses' Grocery Building to replace old Orange Miller Building that was taken out by the highway and new bridge construction. (Code 23)

(Bottom left) Interior of E. E. Morses' Grocery. (Code 23)





The corner of Oak Street and 1st Street (River Parkway). Kimball & Snow's Store (9) and Gem Theater (8). Meeting hall upstairs over theater behind first car.



River Parkway CA 1935. Scene looking west up River Parkway. In 1950, highway construction diverted all traffic from this street and made it a dead end that killed off the business on the street. (Codes 10-7)

Champlin Motor Inn, Max O Tires, Barber Shop & Pool Hall. Garage built and operated by Fred Dejarlais then Lawrence Burke, later Warren Legg operated it. Ernie Peterson of Independent Grain & Feed demolished it later. (Code 10).



In the early 1930's the establishment of the River View Cabins and the Shell gas station/cafe on the Mississippi in Champlin became known as Sage's Corner. Originally owned by William Earl Sage and family. During the 1950's, Louis and Lila Durant, owned the Shell Station and Cafe. (Codes 5 & 6)

Snow & Kimball Building (Code 9)



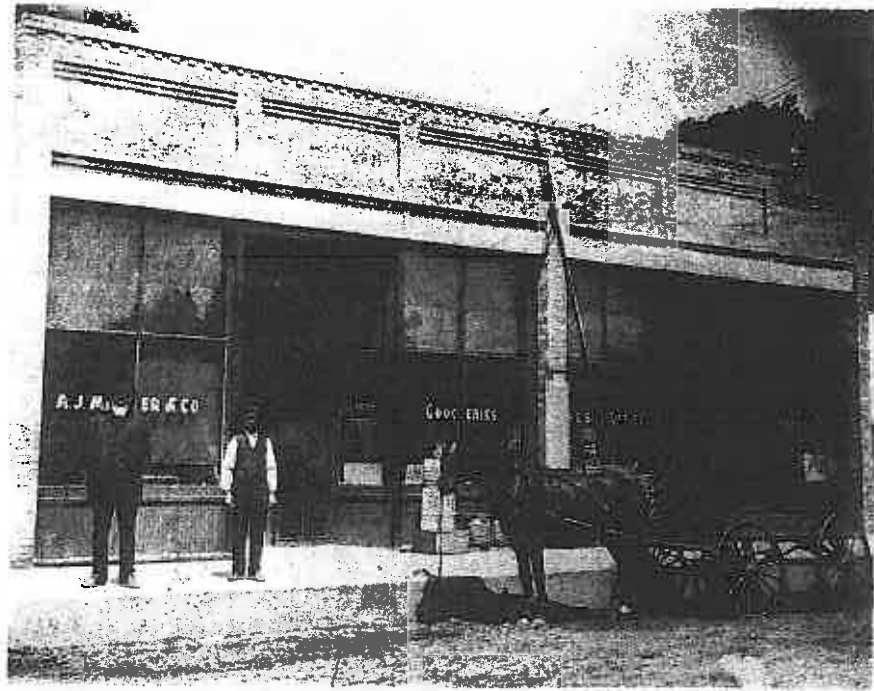
(Top) Left to right: Mr. Hans Eidem, Mr. Charles Hinkleley and Mr. Reynold Reynolds. In operation from 1909 to 1915 on 1st Street, now Riverview Parkway, Champlin.



(Middle) Exterior of Snow & Kimball and unidentified customers.



(Bottom) Interior of Reynolds and Eidem Store groceries, dry goods and notions, 1909 to 1915.



Horse and wagon in front of A. J. Miller's grocery store in Champlin. Arthur J. Miller was the only son of Orange and Mary Miller. Arthur died from complications due to influenza in 1917 at the age of 42. Undated Photograph