

Jefferson Hwy, Elm Creek Parkway, and Signal Improvements

CITY PROJECT 22502

NOVEMBER 12, 2024



Agenda:

Project Location

Existing Conditions

Proposed Improvements

Project Costs and Funding

Assessments

Project Schedule



Project Location

- Jefferson Hwy
- Elm Creek Pkwy (From Jefferson Hwy to Hwy 169)

1.4 miles of roadway

Original construction 1988 and 1993

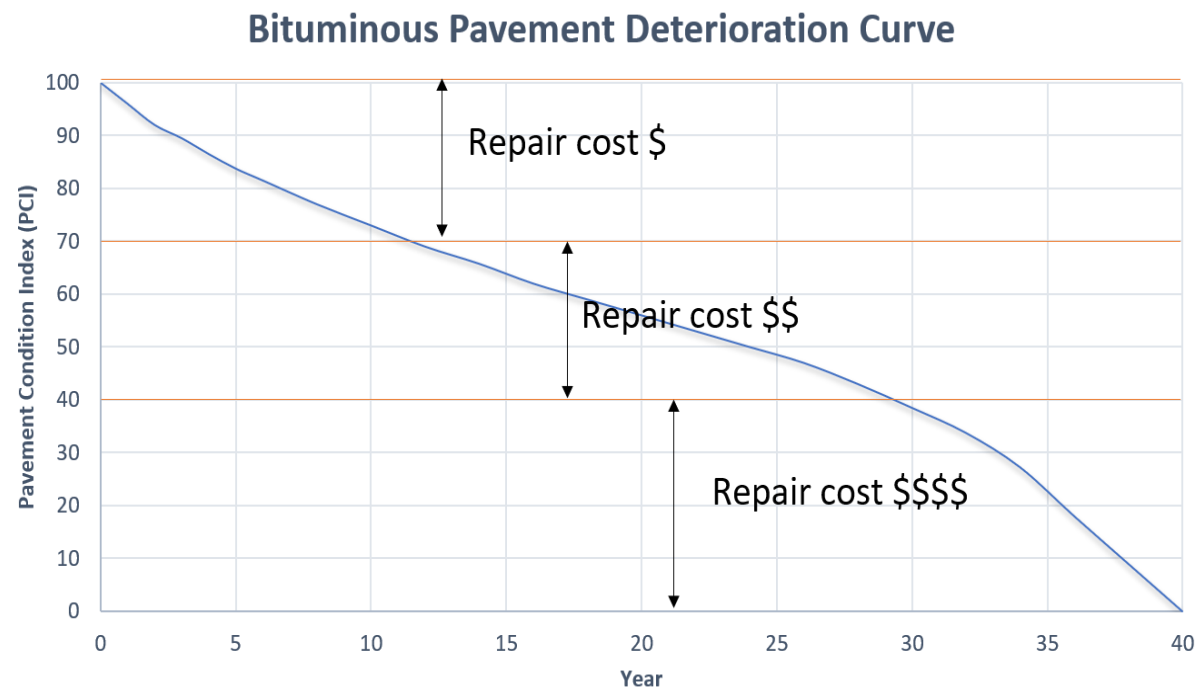
With an overlay completed in 2003





Pavement Condition Index

- Used for Capital Planning and prioritization
- Ranks pavements on a scale according to the amount of pavement deterioration that is visually evident
- Ratings are completed on a three-year cycle with one third (1/3) of the City rated each year
- Rating completed by private independent pavement management company, Goodpointe Technology Inc.
- PCI ratings represent visual pavement condition



Geotechnical Analysis

- Pavement Core and Soil Borings, in addition to PCI are considered when determining the street improvement
 - Pavement cores identify the structural integrity of the existing pavement
 - Soil borings determine the materials and soil conditions present beneath the pavement



Pavement cores



Soil boring



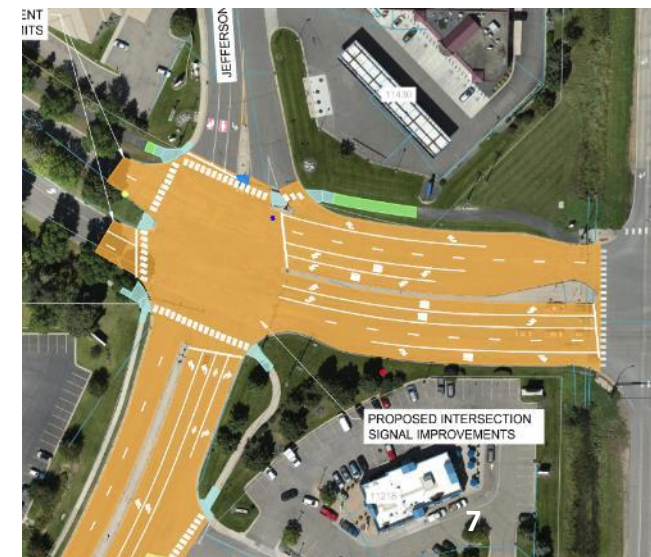
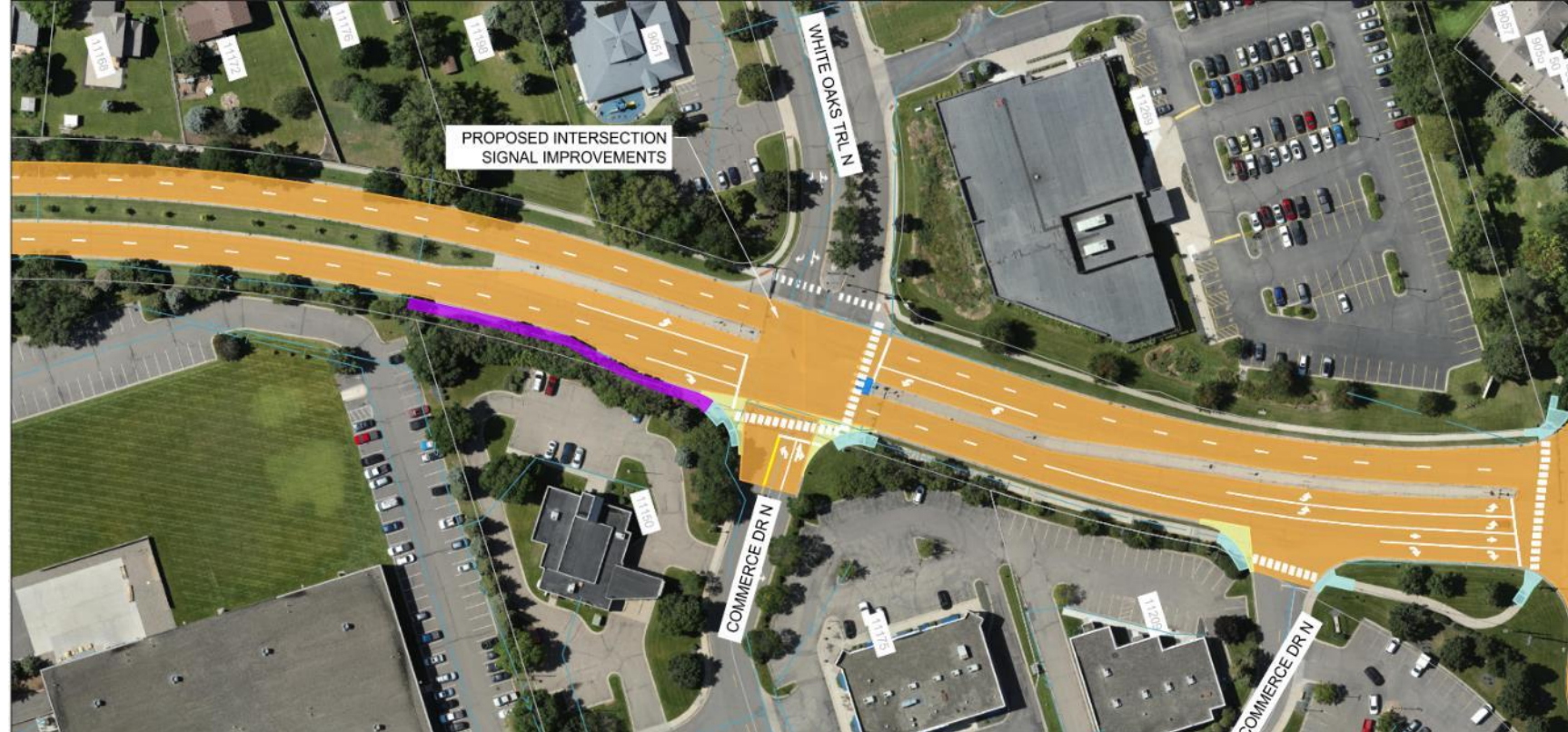
Jefferson Hwy





Proposed Improvements

- 2" mill full width of roadway with 2" overlay
- ADA improvements to trail entrances
- Traffic signal improvements
- Spot sidewalk replacement
- Storm sewer improvements
- Watermain improvements
- Restore disturbed areas





Street Improvements

- 2" mill depth, full road width
- Bituminous paving – 1 lift at 2"
- Maintain existing width
- Spot curb replacement as needed.



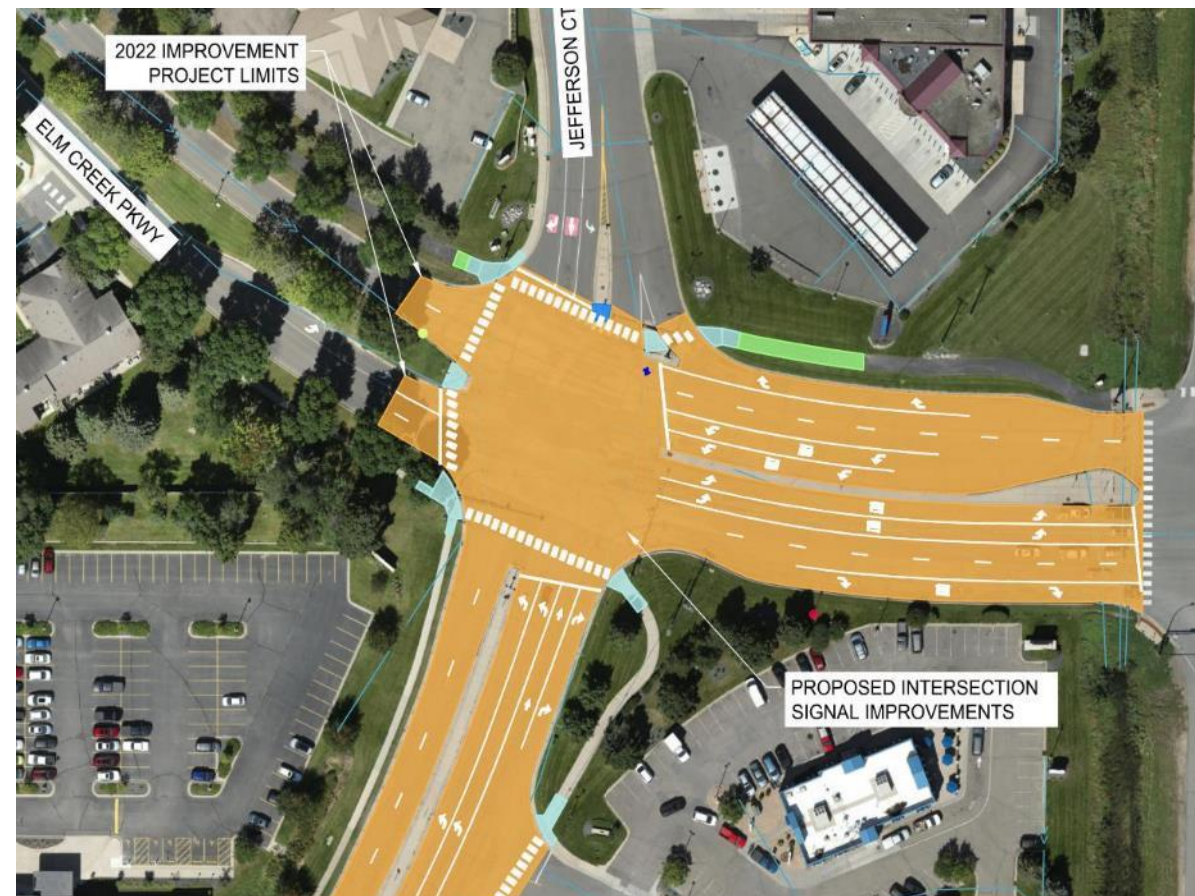
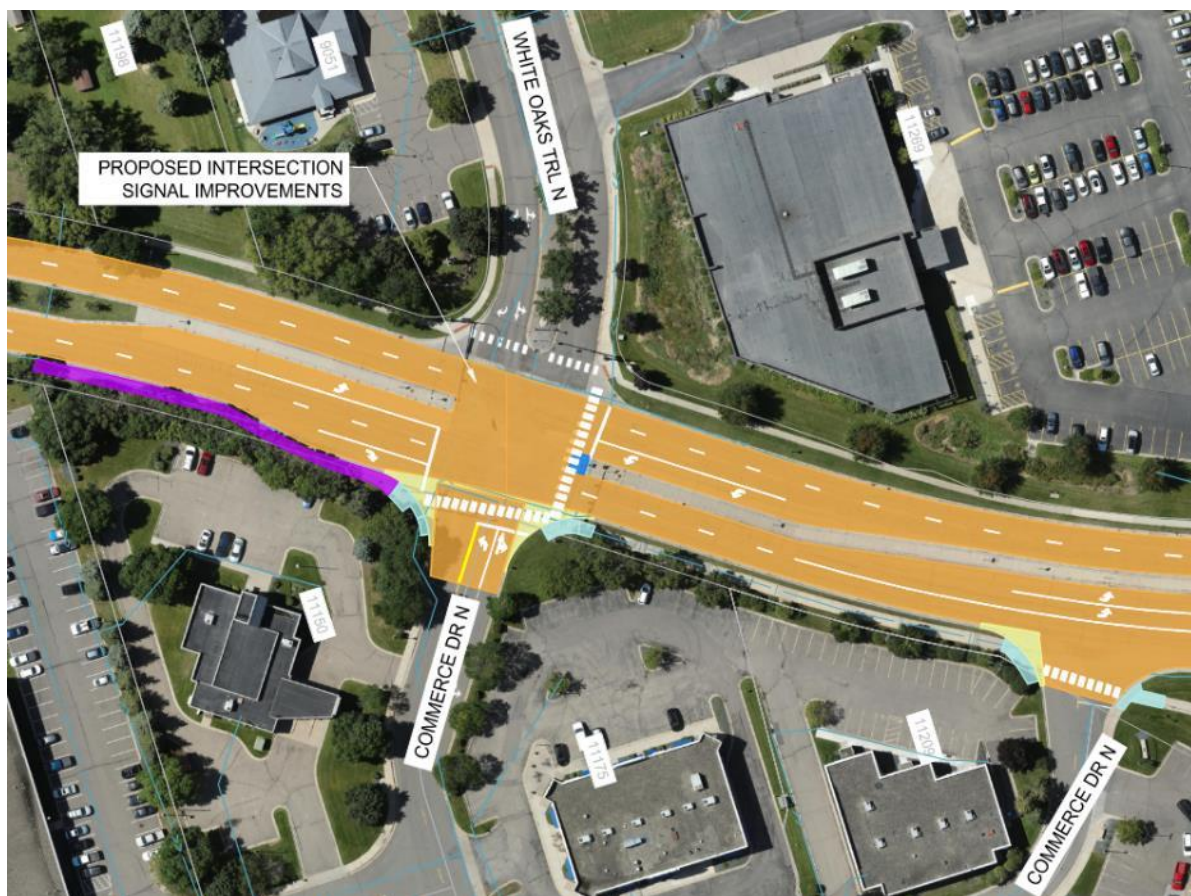
Road Mill

Photo Credit: gopaaldhussa.com



Sidewalk/Trail Improvements

- Construct ADA compliant pedestrian ramps
- Trail Replacement
- Sidewalk Removal





Water System Improvements

Proposed Improvements

- Gate Valve at the intersection of Elm Creek Pkwy will be rebuilt.





Storm Sewer Improvements

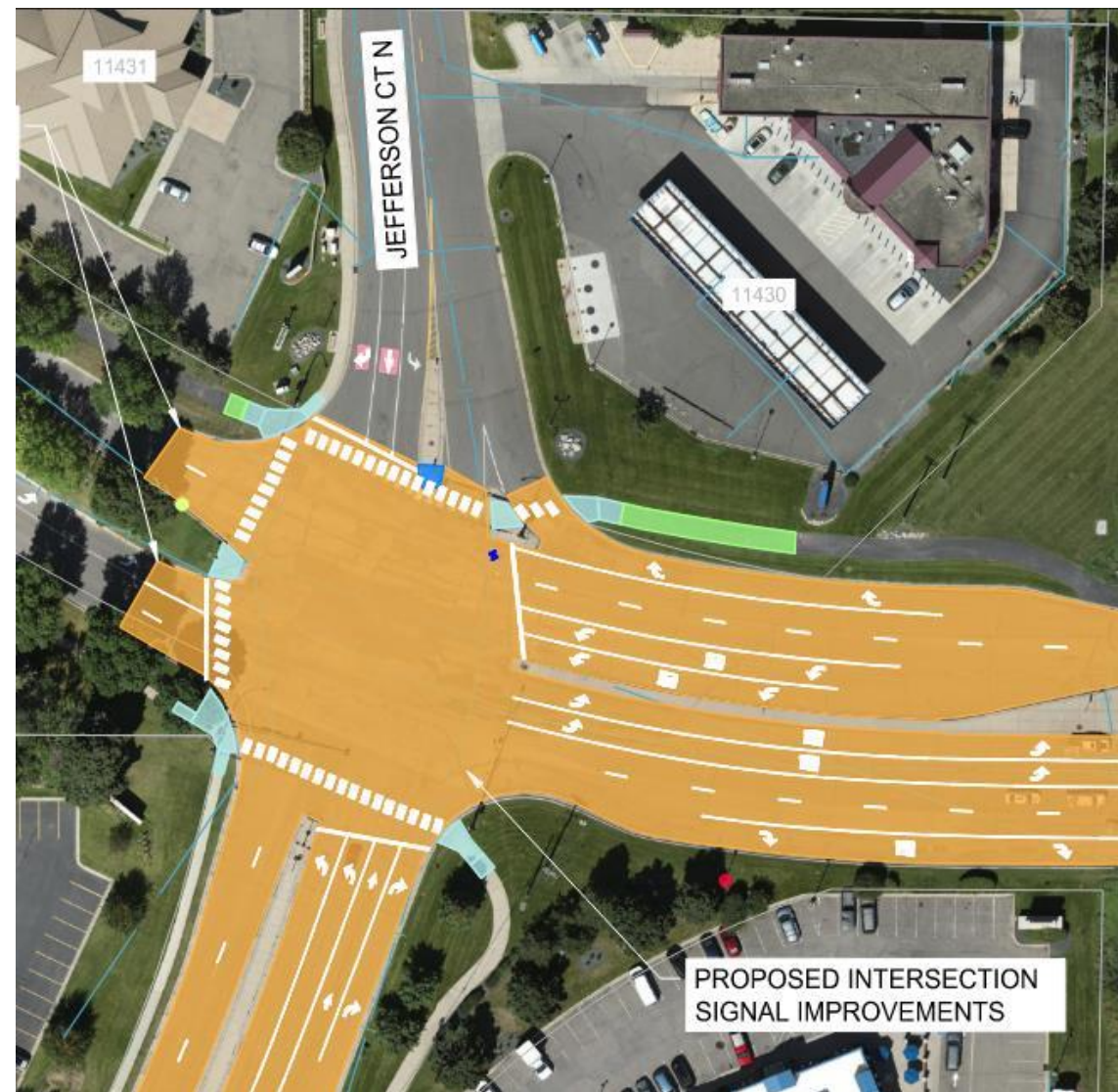
Storm Sewer

- Install additional catch basins at Elm Creek Pkwy
- Improve storm water collection and conveyance



Signal Improvements

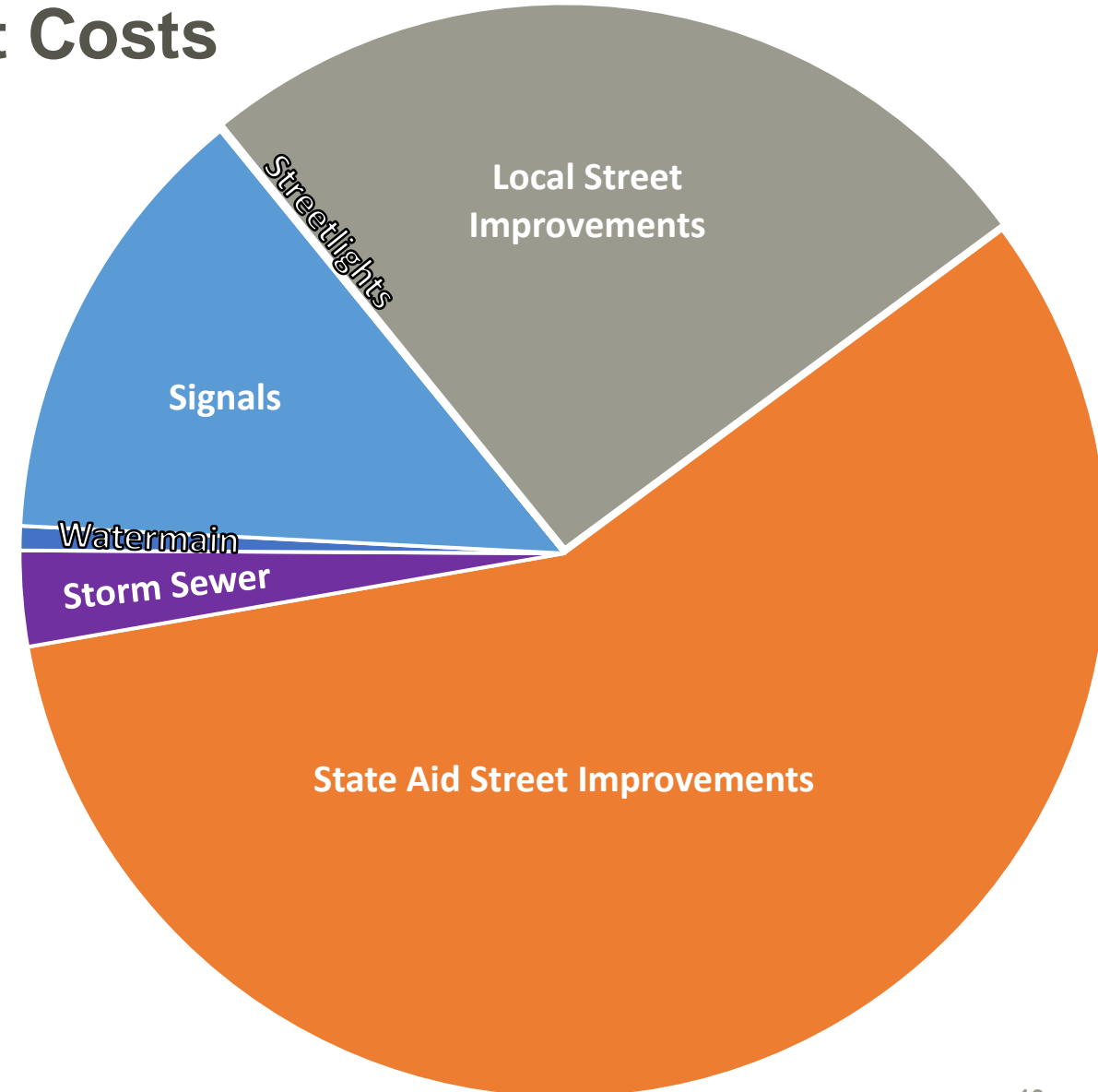
- Signal at Commerce Dr and White Oak Trail N
- Signal at Elm Creek Parkway and Jefferson Highway
- Will be reconfigured with flashing yellows to provide better flow through the intersection.





Estimated Project Costs

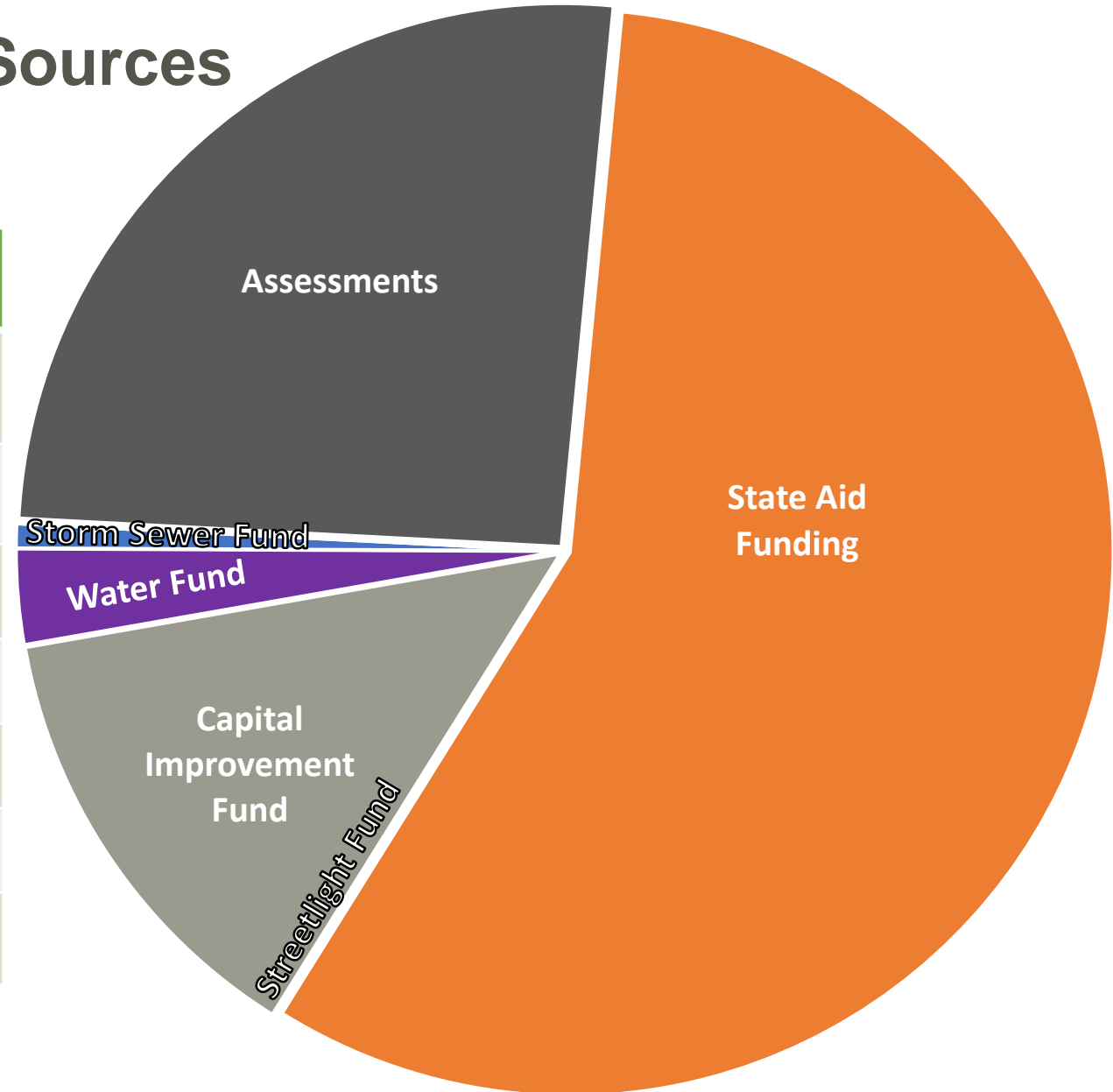
Improvements	Estimated Cost
Local Street Improvements	\$316,519
State Aid Street Improvements	\$706,496
Signal Improvements	\$164,450
Storm Sewer Improvements	\$34,863
Watermain Improvements	\$8,855
Streetlight Improvements	\$506
TOTAL	\$1,231,689





Project Funding Sources

Funding Source	Total
Assessments to benefitting properties	\$316,519
State Aid Funding	\$706,496
Capital Improvement Fund	\$164,450
Storm Revenue Fund	\$34,863
Water Revenue Fund	\$8,855
Streetlight Improvements	\$506
TOTAL	\$1,231,689





Assessments

Commercial

- Mill & Overlay: based on a per unit cost with a normal lot size and the front footage of the parcel accounting for total number of units being 34. The 34 units are divided throughout the 14 parcels based on the front footage of improvement.

Public Hearing November 12, 2024, will finalize the assessment amount





Assessment Payment Methods

Payment Terms:

- 5 year
- Interest rate is 1% over the prime rate. Final rate determined on August 1, 2025.

Option 1:

- Pre-pay partial or full assessment amount without interest to the City by end of day November 15, 2025

Option 2:

- Pay assessment with property taxes over a 5-year period with interest starting in 2026
- First year's interest is from November 1, 2025, thru December 31, 2026
- Pay remaining entire balance by November 15th in any subsequent year
- No partial payments allowed

Senior Citizen and Disabled Deferred Assessment Program- Must meet income and eligibility requirements and submit application.



Preliminary Project Schedule

Order
Feasibility
Study

Jul 8, 2024



Accept Feasibility
Study, Hold
Improvement
Hearing,
Order the Project,
Establish Pending
Assessment

Nov 12, 2024



Approve
Plans and
Specs, Order
Ad for Bid

Feb 2025



Award
Construction
Contract

Mar 2025



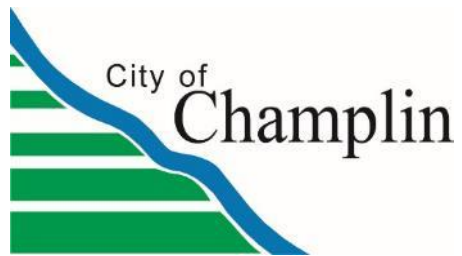
Construction

*May-Sept
2025*



Assessment
Hearing

Oct 2025



Additional Information

- This presentation and future postings will be placed on the City of Champlin website click Road Projects
- <https://ci.champlin.mn.us/champlin-road-projects/>
- Prior to construction there will be a project email address and hotline number to submit questions or concerns.
- For now, you can email cityengineering@ci.champlin.mn.us or call City Hall at 763-421-8100.

